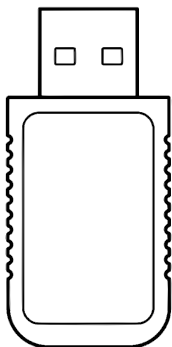


1000Hz Bootloader

For PS5/Raspberry Pi GP2040-CE Fighting Keyboards, Keyboard & Mouse Converters



User Manual

Product Features

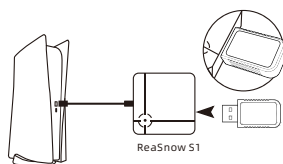
The 1000Hz Bootloader can be used by simply plugging it into the USB port of the target peripheral (such as a Raspberry Pi GP2040-CE Fighting Keyboard or a keyboard/mouse adapter). Before using the target peripheral to connect to the PS5 console via USB, please turn on the following settings.

Operation Guide

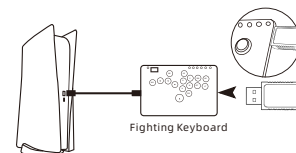
1. Please turn on the USB connection function of the PS5 console first:



2. Connection diagrams are as follows:



- 1 -



3. Manual for Using 1000Hz Bootloader with Raspberry Pi GP2040-CE Series Fighting Keyboard

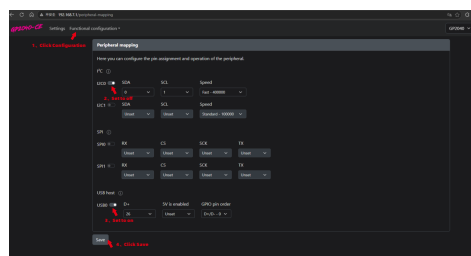
- Dedicated firmware for Fighting Keyboard update
A: Download the dedicated firmware for the Fighting Keyboard to enable support for the 1000Hz Bootloader. Click here to download ("Firmware download links and update instructions will be provided soon.")
B: Put the Fighting Keyboard into firmware update mode (Bootloader mode), then copy and paste the downloaded firmware file onto the GP2040-CE drive that appears on your computer.



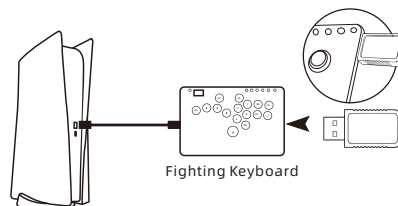
- How to Configure GP2040-CE Fighting Keyboard for 1000Hz Bootloader
A: After ensuring the dedicated firmware has been successfully updated, put the Fighting Keyboard into Web Config Mode, then enter <http://192.168.71/> in your computer's browser.

- 2 -

D: As shown below, click "Configuration" → "USB Host" on the web page. Enable "USB0" and click "Save" to complete the setup.



3. Running PS5 Games with GP2040-CE and 1000Hz Bootloader
Plug the 1000Hz Bootloader into the USB port of your Fighting Keyboard. Connect the Fighting Keyboard to the PS5 console via USB. Press the HOME button on the Fighting Keyboard. You can now play all PS5 games normally.

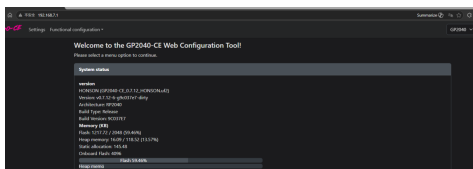


- 4 -

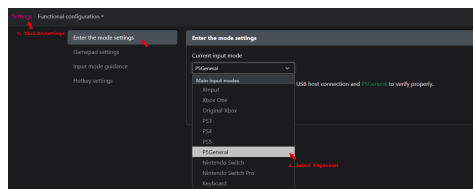
Notes:

The Raspberry Pi series Fighting Keyboards are open-source products. This dedicated firmware is a custom development for Raspberry Pi-based Fighting Keyboards, enabling compatible products to run all PS5 games using the 1000Hz Bootloader.

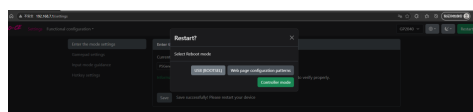
We believe that the 1000Hz Bootloader, with its simple and intuitive operation and 1000Hz ultra-low latency, will provide users with an extraordinary gaming experience.



B: As shown in the image below, click on Settings → Input Mode Settings on the configuration page. Locate and select "PSGeneral".



C: After selecting "PSGeneral", click "Save".



- 3 -

- 5 -